

VN-ROM

REFRIGERATED OPEN MERCHANDISER

DESCRIPTION OF STANDARD UNIT:

- Construction and casing of stainless steel
- LED lighting
- Side glasses: double with silver serigraphy
- silver serigraphy
- 3 rows of highlighted, adjustable shelves: glass (VN-R, VN-D) or stainless steel (VN-H)
- Yellow lighting
- Perforated, stainless steel back panel in self-service (O) version
- Forced cooling
- Temp. range*: 0 ÷ +4°C
- Automatic water Evaporation
- Hygrostat (humidity reduction)
- Front opening glass
- Digital temperature control



OPTIONS:

- Version for chocolate & pralines
- For external condensing unit
- Wheels
- Ultrasonic humidifier (except VN 2)
- MDF front panel and sides
- Rear, hinged Plexiglas doors for self-service version
- Cash out counter
- 45° Corner

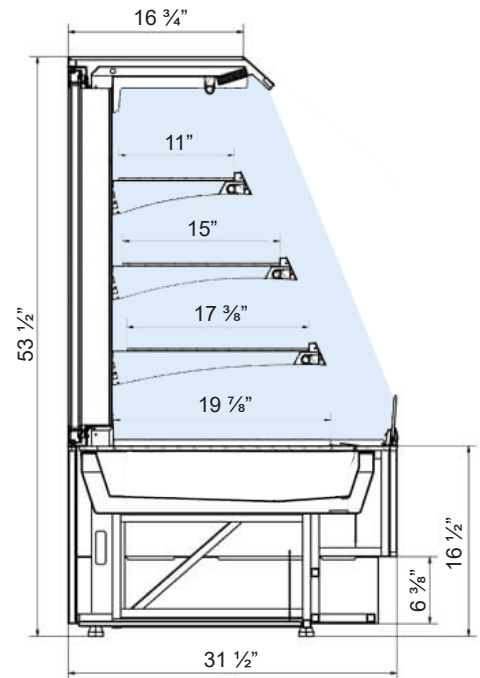
* Temperature range given for maximum ambient temperature of +25°C and relative humidity 60%.

** Cooling power demand: 1500 W/1m³ at evaporating temp. -10°C. Automatic water evaporation on request.

*** In version with doors: only top lighting

SPECIFICATIONS

MODEL	LENGTH	DEPTH	HEIGHT	WEIGHT (LBS / KG)	ELECTRICAL
VN2-ROM	23 5/8"	31 1/2"	53 1/2"	198 / 90	115V / 60Hz / 1ph 8 AMP
VN3-ROM	35 1/2"		53 1/2"	253 / 115	115V / 60Hz / 1ph 9.5 AMP
VN4-ROM	47 1/4"		53 1/2"	330 / 150	115V / 60Hz / 1ph 11.5 AMP



Profile Colors



RAL 9006
White
Aluminium

Wood Stains



22-05 Burnat, Calvados, 22-66 Dark Nut, 23-63 Dark Teak, 22-74 Light Nut, 23-32 Light Teak, 22-68 Nut, 23-25 Orange, 26-36 Palisander

Available Colors



RAL 1015 Beige, RAL 1023 Traffic Yellow, RAL 3020 Traffic Red, RAL 5015 Sky Blue, RAL 6032 Signal Green, RAL 9016 Traffic White, RAL 9005 Jet Black, RAL 9006 White Aluminium, RAL 1018 Zinc Yellow, RAL 1036 Pearl Gold, RAL 2004 Pure Orange, RAL 3004 Purple Red, RAL 4010 Telemagena, RAL 5002 Ultramarine Blue, RAL 6018 Yellow Green, RAL 7016 Anthracite Grey, RAL 7022 Umbra Grey, RAL 7035 Light Grey, RAL 8016 Mahogany Brown, RAL 9010 Pure White Structural

