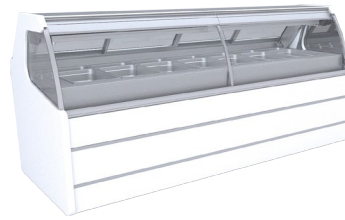
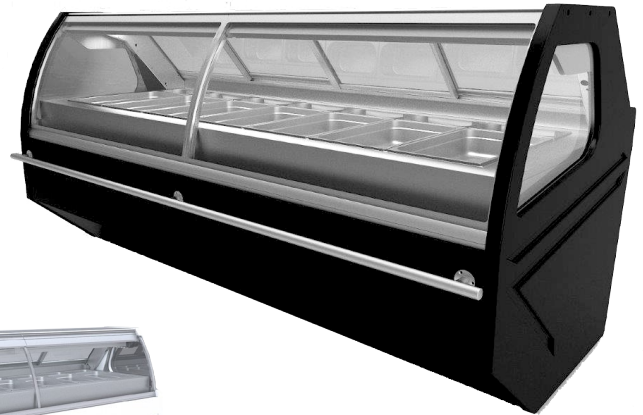


HWM-SD

CURVED FRONT GLASS SALAD DISPLAY CASE

DESCRIPTION OF STANDARD UNIT:

- Forced cooling
- LED Market lighting.
- Construction of powder-coated steel
- ABS sides
- Front made of powder-coated steel
- Chrome bumper
- Stainless steel worktop
- Stainless steel storage chamber (except corners)
- Heater under evaporator (except corners)
- Heated Aluminum glass profile
- Temp. range* (G): 0 ÷ +4 °C
- Front opening glass
- Automatic water Evaporation
- Digital temperature control

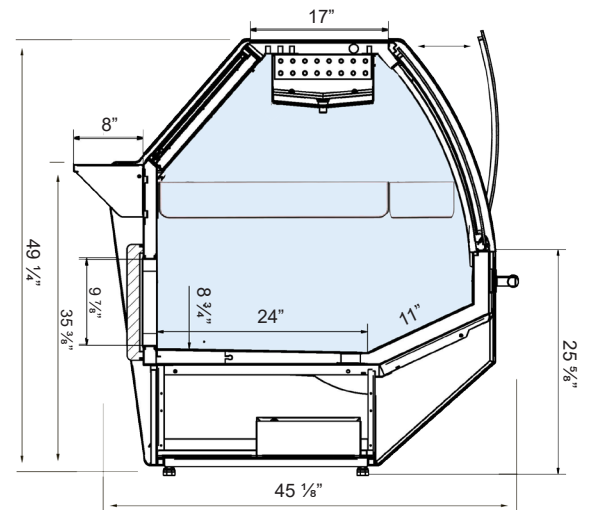


OPTIONS:

- For external condensing unit
- Multiplexing
- Shelf
- Stainless steel shelf for customer
- Wheels
- Back work top
- Wood finish

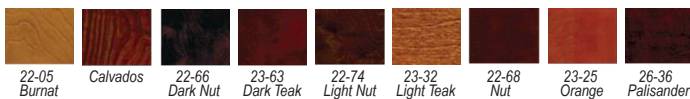
SPECIFICATIONS

MODEL	LENGTH	DEPTH	HEIGHT	WEIGHT (LBS / KG)	ELECTRICAL
HWM4-SD	52 1/4"	45 1/8"	49 1/4"	551 / 250	115V / 60Hz / 1ph / 6 AMP
HWM8-SD	101 1/2"	45 1/8"	49 1/4"	871 / 395	115V / 60Hz / 1ph / 8 AMP
HWM12-SD	151 1/2"	45 1/8"	49 1/4"	1259 / 571	115V / 60Hz / 1ph / 8 AMP

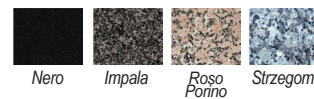


* Temperature range given for max ambient temp of +30°C and relative humidity of 55%.
 ** Cooling power demand: 400 W/1mr at evaporating temp. -10°C (Hawana W); 350W/1mr at evaporating temp. -25°C

Wood Stains



Granite Finishes



Available Colors

