

## HW-COC

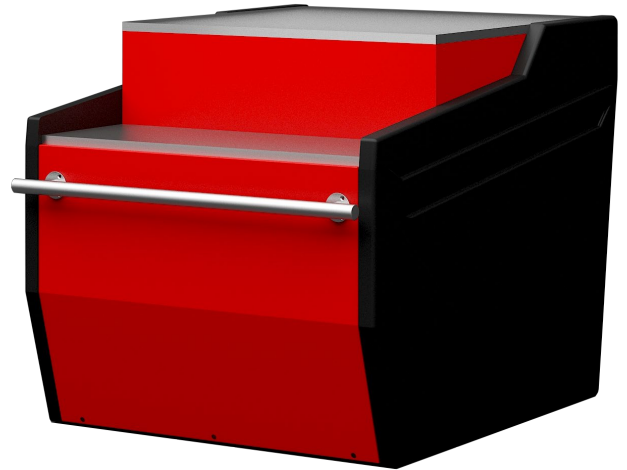
### CHECK-OUT CASH COUNTER - NON REFRIGERATED UNIT

#### DESCRIPTION OF STANDARD UNIT:

- Construction of powder-coated steel
- ABS sides
- Front made of powder-coated steel
- Stainless steel worktop

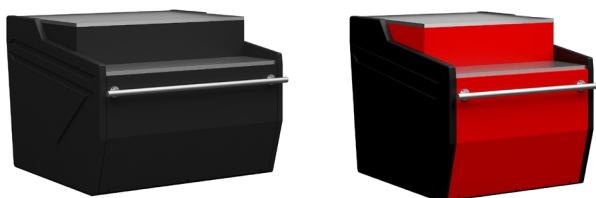
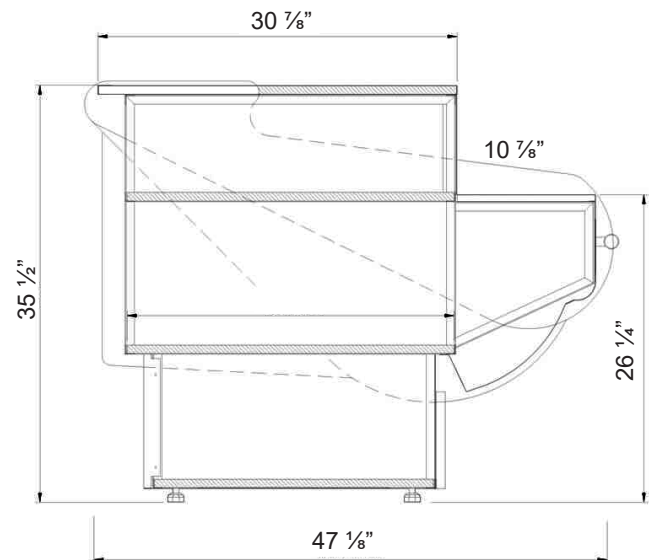
#### OPTIONS:

- Granite worktop
- Wheels
- Colors of choice

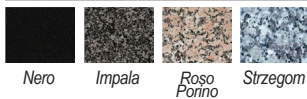


SPECIFICATIONS				
MODEL	LENGTH	DEPTH	HEIGHT	WEIGHT (LBS / KG)
HW3-COC	35 1/2"	47 1/8"	35 1/2"	315 / 142
HW4-COC	47 1/2"	47 1/8"	35 1/2"	418 / 190

**\*\*Custom length available\*\***



#### Granite Finishes



#### Available Colors

