

VN-ROM

REFRIGERATED OPEN MERCHANDISER

DESCRIPTION OF STANDARD UNIT:

- Construction and casing of stainless steel
- LED lighting
- Side glasses: double with silver serigraphy
- silver serigraphy
- 3 rows of highlighted, adjustable shelves: glass (VN-R, VN-D) or stainless steel (VN-H)
- Yellow lighting
- Perforated, stainless steel back panel in self-service (O) version
- Forced cooling
- Temp. range*: 0 ÷ +4°C
- Automatic water Evaporation
- Hygrostat (humidity reduction)
- Front opening glass
- Digital temperature control



OPTIONS:

- Version for chocolate & pralines
- For external condensing unit
- Wheels
- Ultrasonic humidifier (except VN 2)
- MDF front panel and sides
- Rear, hinged Plexiglas doors for self-service version
- Cash out counter
- 45° Corner

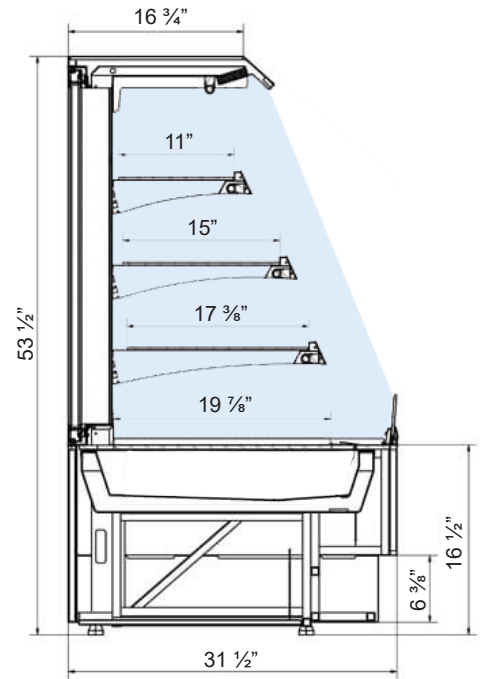
* Temperature range given for maximum ambient temperature of +25°C and relative humidity 60%.

** Cooling power demand: 1500 W/1mr at evaporating temp. -10°C. Automatic water evaporation on request.

*** In version with doors: only top lighting

SPECIFICATIONS

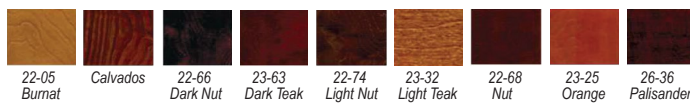
MODEL	LENGTH	DEPTH	HEIGHT	WEIGHT (LBS / KG)	ELECTRICAL
VN2-ROM	23 5/8"	31 1/2"	53 1/2"	198 / 90	115V / 60Hz / 1ph 8 AMP
VN3-ROM	35 1/2"		53 1/2"	253 / 115	115V / 60Hz / 1ph 9.5 AMP
VN4-ROM	47 1/4"		53 1/2"	330 / 150	115V / 60Hz / 1ph 11.5 AMP



Profile Colors



Wood Stains



Available Colors

