

VLV-RP

SQUARE FRONT GLASS REFRIGERATED DISPLAY CASE

DESCRIPTION OF STANDARD UNIT:

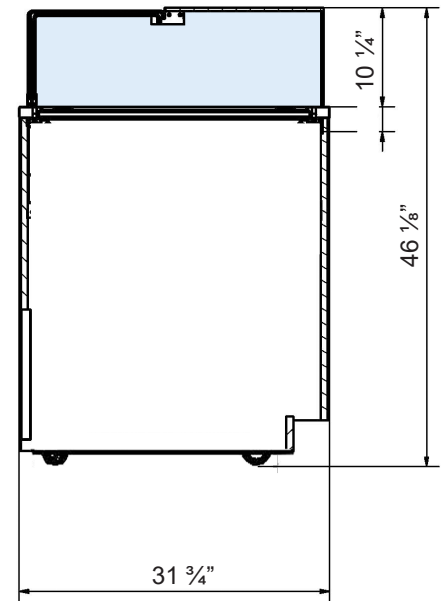
- 2 versions: Refrigerated (VLV-RP), Dry (VLV-DP)
- LED lighting
- Construction of powder coated steel
- Wooden casing
- Front and Side with glasses
- Finishes: Silver
- Yellow lighting
- Sliding plexi rear doors
- Forced cooling
- Temp. range*: 0 ÷ +4 °C
- Automatic water Evaporation
- Digital temperature control

OPTIONS:

- Version for chocolate & pralines
- Version for gelato
- Dry non refrigerated version (room temperature)
- For external condensing unit
- Wheels
- Ultrasonic humidifier
- For individual decoration
- Multiplexing
- Flap doors on the front
- Highlighted front

* - Values are provided for an ambient temp of +25°C and relative humidity of 60%.

** - Cooling power demand: 1000 W/1m³ at evaporating temp. -10°C.



SPECIFICATIONS

MODEL	LENGTH	DEPTH	HEIGHT	WEIGHT (LBS / KG)	ELECTRICAL
VLV4-RP	52 1/8"	31 3/4"	46 1/8"	339 / 154	115V / 60Hz / 1ph / 5.9 AMP
VLV6-RP	76 1/2"	31 3/4"	46 1/8"	509 / 231	115V / 60Hz / 1ph / 8.5 AMP
VLV8-RP	98 1/2"	31 3/4"	46 1/8"	677 / 307	115V / 60Hz / 1ph / 10.5 AMP

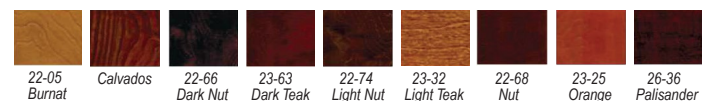


Profile Colors



RAL 9006
White
Aluminium

Wood Stains



Available Colors

