

TSC-RP

CURVED FRONT GLASS REFRIGERATED DISPLAY CASE

DESCRIPTION OF STANDARD UNIT:

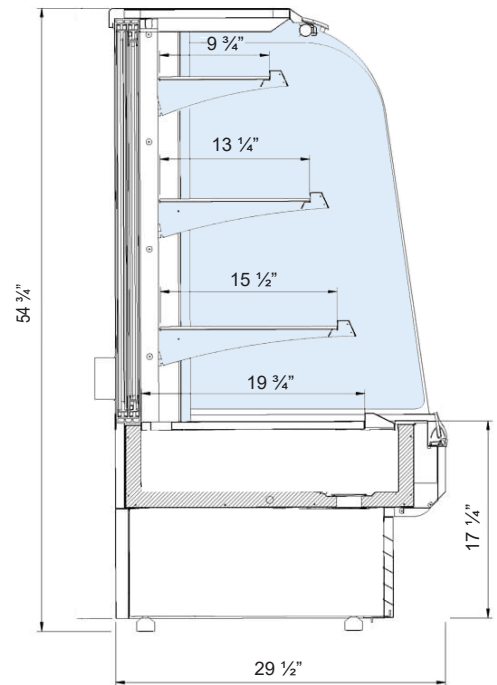
- 2 versions: refrigerated (CH), hot (GR)
- Construction of powder coated steel
- Finishes in stainless steel or powder coated steel
- Double front, and side glass with PCV finishing
- Perforated stainless steel back panel
- Highlighted (LED) and adjustable stainless still shelves
- Controller on the front or back
- Access to the condenser from the front
- Tempered glass
- Forced cooling
- Temp. range*: 0 ÷ +4°C
- Automatic defrosting
- Automatic water evaporation
- Front opening glass

OPTIONS:

- Multiplexing
- Version for external condensing unit
- Stainless steel shelves & base decks
- Light plafond
- Night blind
- Wheels

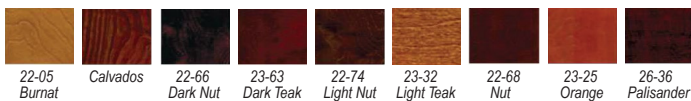


SPECIFICATIONS					
MODEL	LENGTH	DEPTH	HEIGHT	WEIGHT (LBS / KG)	ELECTRICAL
TSC2-RP	23 3/8"	29 1/2"	54 3/4"	198 / 90	115V / 60Hz / 1ph / 8 AMP
TSC3-RP	35 1/2"		54 3/4"	253 / 115	115V / 60Hz / 1ph / 9.5 AMP
TSC4-RP	47 1/4"		54 3/4"	330 / 150	115V / 60Hz / 1ph / 11.5 AMP



* Temperature range given for maximum ambient temperature of +25°C and relative humidity 60%.
 ** Cooling power demand: 1500 W/1mr at evaporating temp. -10°C. Automatic water evaporation on request.
 *** In version with doors: only top lighting

Wood Stains



Available Colors

