

## VRM-ROM

### MINI 24" DEEP REFRIGERATED OPEN MERCHANDISER

#### DESCRIPTION OF STANDARD UNIT:

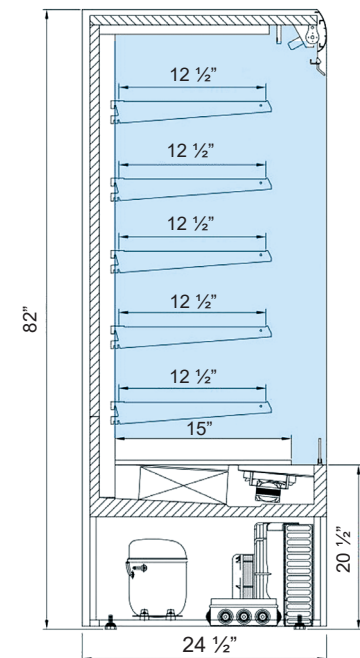
- LED lighting
- Construction of powder-coated steel
- Sides of powder-coated steel: solid or glazed
- 5 rows of adjustable shelves
- White lighting
- Night blind
- EPOS ticket strips
- Forced cooling
- Temp. range\*: 0 ÷ +4°C
- Automatic defrosting
- Automatic water evaporation
- Digital temperature control



#### OPTIONS:

- Multiplexing
- For external condensing unit
- Highlighted shelves
- Stainless steel shelves & base decks
- Back panel from mirrored stainless steel
- Angled mirrored stainless steel roof
- Stoppers: wired or from Plexiglas
- Vertical Plexiglas separator
- Shelf separators (wired)
- Profile with hooks
- Wood casing
- Wheels
- Heater under evaporator
- Sliding glass doors (in standard white frame, for request - black one)
- Hinged Plexiglas doors

SPECIFICATIONS					
MODEL	LENGTH	DEPTH	HEIGHT	WEIGHT (LBS / KG)	ELECTRICAL
VRM2-ROM	23 5/8"	24 1/2"	82"	243 / 110	115V / 60Hz / 1ph / 11.5 AMP
VRM3-ROM	35 1/2"			397 / 180	115V / 60Hz / 1ph / 15 AMP
VRM4-ROM	51 1/8"			441 / 200	115V / 60Hz / 1ph / 15 AMP
VRM5-ROM	63"			507 / 230	115V / 60Hz / 1ph / 15 AMP
VRM6-ROM	75 3/4"			551 / 250	220V / 60Hz / 1ph / 13.5 AMP
VRM7-ROM	82 5/8"			584 / 265	220V / 60Hz / 1ph / 13.5 AMP
VRM8-ROM	98 1/2"			661 / 300	220V / 60Hz / 1ph / 15 AMP



\* Temperature range given for maximum ambient temperature of +25°C and relative humidity 60%.  
 \*\* Cooling power demand: 1500 W/1mr at evaporating temp. -10°C. Automatic water evaporation on request.  
 \*\*\* In version with doors: only top lighting



#### Available Colors

